



Join Brewer Library and Challenger Learning
Center of Maine for a

VIRTUAL MISSION

Wed, Feb 10 from 3:00-4:15 PM

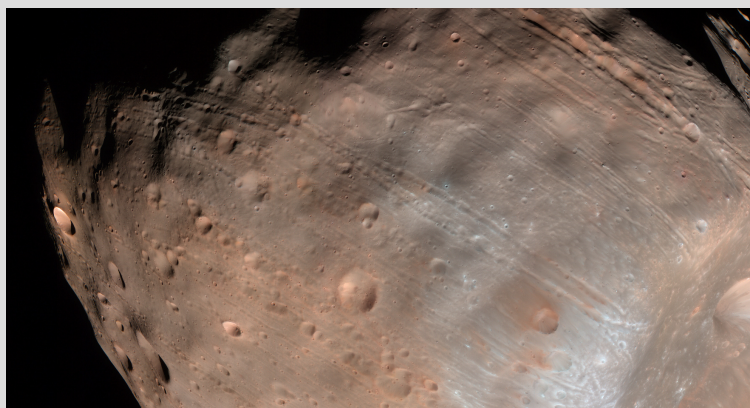


**Featuring Former NASA Astronaut
Dorothy Metcalf-Lindenburger**

DESTINATION MARS

Delivered in real-time, online by Challenger Learning Center Flight Directors.

Researchers are ready to explore Mars, but there's one glaring problem – more than 40 million miles separate Earth from Mars. Students will go on a mission to analyze data and determine which of the Red Planet's moons is the best location for building a research base.



- Aligned to national education standards, recommended for grades 4-6
- 1-hour experience delivered from start to finish by a Flight Director
- Perfect for remote, hybrid, and socially distant classrooms
- Features small group and whole class activities
- Students need a device with audio/video capability and internet
- No handouts or supplies needed



Join the mission TODAY!

Hosted by Brewer Library

email
sarnold@brewermaine.gov
for info & to register

Give Your Students a Virtual Space Mission Experience!

The Mission: Researchers are ready to explore Mars, but there's one glaring problem – more than 40 million miles separate Earth from the Red Planet. This distance makes it impossible to travel back and forth between the two planets while completing our research. We need to build a base on one of the Red Planet's moons, Deimos or Phobos, that will allow us to send a spacecraft to the surface of Mars and back in the fastest and safest way possible. Student teams will select which moon is best to build a base by analyzing three sets of data collected by rovers on Deimos and Phobos.

The team's research efforts come to a halt when they encounter a critical emergency – a solar storm approaches and all communication signals are lost. To successfully explore Mars' moons and complete the mission, the students must work together to protect the rovers and restore communication, analyze the data from their experiments, and select a moon to build a base.

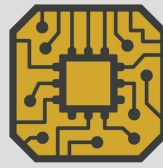


Student Teams: Teamwork is critical to our mission! Each student is assigned to a team and works with their small group to complete their research and analysis.



Geology Team

Explore terrain maps to analyze the features of the lunar surfaces in search for a location for a suitable human habitat. Conduct tests at each of these locations to determine levels of iron found in the region.



Rover Team

Calibrate and examine all of the required instruments on the rover to aid in exploration. Select additional instruments to incorporate more design features to be used on future missions.



Navigation Team

Analyze terrain maps of the lunar surfaces to determine the best possible routes for the rovers. Explore interactive maps to analyze the satellite communication signals available in the area.



Conditions Team

Conduct tests on both lunar surfaces to analyze the radiation exposure levels at each location, as well as temperature ranges found across the region.

Ready for Launch?! Join Wed, Feb 10th

- ✓ **Contact us to join this mission on Wed, Feb 10th at 3:00 PM**
- ✓ **We send you the login information.**
- ✓ **The countdown begins. Leave the rest to us!**
- ✓ **Hosted by Brewer Library- email sarnold@brewermaine.gov**



Development of Destination Mars was made possible with support from Northrop Grumman

© 2020 Challenger Center