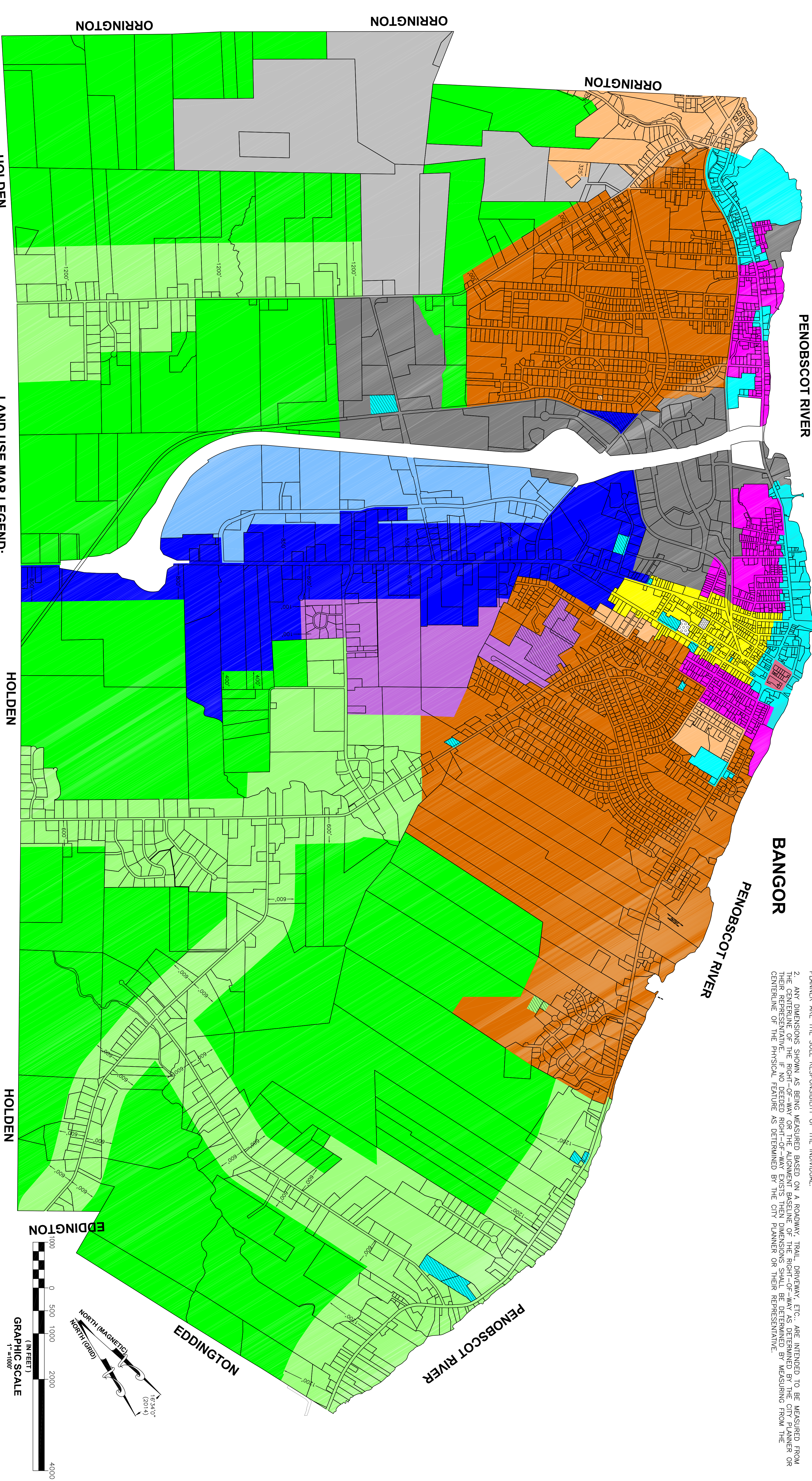


BANGOR
PENOBSCOT RIVER

BANGOR
PENOBSCOT RIVER

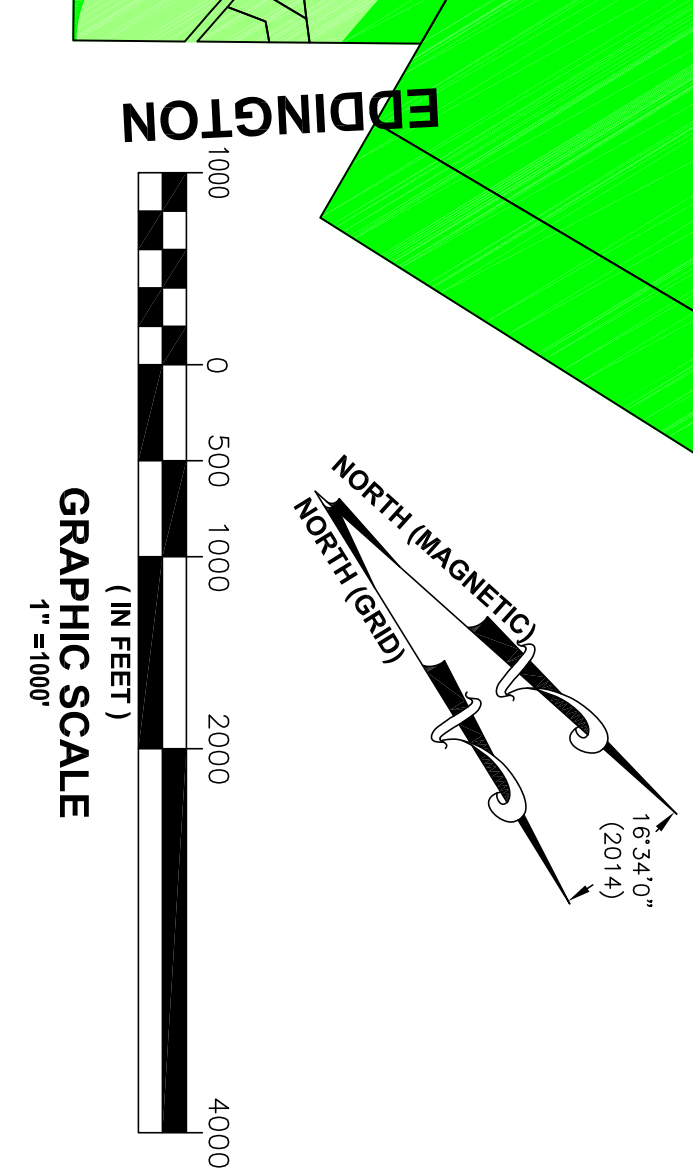
- NOTES:
 1. ALL INFORMATION SHOWN ON THIS PLAN IS APPROXIMATE AND SHALL BE VERIFIED WITH THE CITY PLANNER, OR THEIR REPRESENTATIVE, PRIOR TO ANY DEVELOPMENT. ASSUMPTIONS AS TO ZONING MADE BY INDIVIDUALS WITHOUT VERIFICATION BY THE CITY PLANNER ARE THE SOLE RESPONSIBILITY OF THE INDIVIDUAL.
 2. ANY DIMENSIONS SHOWN AS BEING MEASURED BASED ON A ROADWAY, TRAIL, DRIVEWAY, ETC., ARE INTENDED TO BE MEASURED FROM THE CENTERLINE OF THE RIGHT-OF-WAY OR THE ALIGNMENT BASELINE OF THE RIGHT-OF-WAY AS DETERMINED BY THE CITY PLANNER OR THEIR REPRESENTATIVE. THIS REPRESENTATION IS PROVIDED AS IS AND DOES NOT CONSTITUTE A GUARANTEE OF ACCURACY. DIMENSIONS SHOWN FROM THE CENTERLINE OF THE PHYSICAL FEATURE AS DETERMINED BY THE CITY PLANNER OR THEIR REPRESENTATIVE.



HOLDEN **LAND USE MAP LEGEND:**

- | | | | | | |
|--|--------------------------------|--|--------------------------------------|--|--|
| | CONVENIENCE BUSINESS (CB) | | HIGH DENSITY RESIDENTIAL 2 (HDR-2) | | RURAL |
| | DOWNTOWN DEVELOPMENT (DD) | | INDUSTRIAL (IND) | | CONTRACT USE |
| | GENERAL BUSINESS (GB) | | INDUSTRIAL 2 (IND-2) | | CONTRACT USE ADAPTIVE REUSE (C-AR) |
| | HIGH DENSITY RESIDENTIAL (HDR) | | LOW DENSITY RESIDENTIAL (LDR) | | CONTRACT USE ADAPTIVE RESIDENTIAL MULTI-UNIT (C-ARM) |
| | | | MEDIUM DENSITY RESIDENTIAL 1 (MDR-1) | | |
| | | | MEDIUM DENSITY RESIDENTIAL 2 (MDR-2) | | |
| | | | OFFICE RESIDENTIAL (OR) | | |
| | | | PROFESSIONAL BUSINESS (PB) | | |

HOLDEN



CITY OF BREWER
LAND USE MAP
JUNE 2018